

GKM MeiStream Plus Woltmann Cold Potable Water Meters

GKM MeiStream Plus is a Woltmann-type water meter designed for measuring bulk flows of cold potable water for revenue billing in commercial or industrial applications and distribution system monitoring.

Special Features

- Meter with MID pattern approval acc. to OIML R49
- High turndown ratio, R315 in horizontal installation
- Maximum Admissible Pressure of 16 bar
- Used materials are temperature resistant up to 70°C
- Register prepared for HRI-Mei pick-up
- Use of optical pulsers type OD is still possible
- No abrupt restrictions directly downstream of the meter

Application

- Measurement of medium and high flowrates
- Measurement of low flow e.g. in light load periods
- For leakage control

Robust as ever

The GKM MeiStream Plus is manufactured from the highest quality materials for maximum resistance to wear and corrosion. Meter body is epoxy powder coated for protection in all environments. By using hydrodynamic approach, GKM MeiStream Plus measuring elements are more robust than ever while maintaining its accuracy.

HRI-Mei

The HRI-Mei is a data capture device for GKM MeiStream Plus. All GKM MeiStream Plus registers are prepared to receive HRI-Mei. The HRI-Mei provides a high resolution pulse output with optional water flow direction detection. As a result of inductive-based technology, HRI-Mei has no influence of magnetic field and offers additional data such as tampering and self diagnostic.

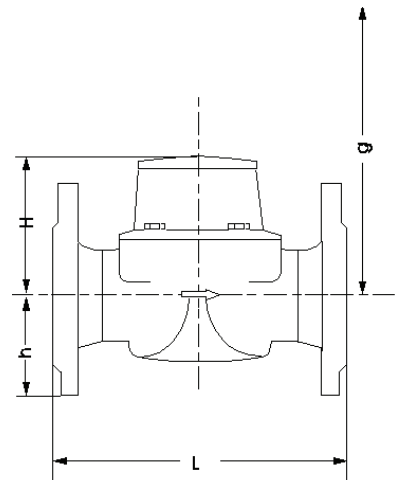


MeiStream Plus Metrological Characteristics



Meter Size			DN50	DN80	DN100	DN150
Minimum Flowrate	$Q_1 \pm 5\%$	m ³ /h	0.079	0.2	0.318	0.794
Transitional Flowrate	$Q_2 \pm 2\%$	m ³ /h	0.127	0.32	0.508	1.27
Permanent Flowrate	$Q_3 \pm 2\%$	m ³ /h	25	63	100	250
Overload Flowrate	$Q_4 \pm 2\%$	m ³ /h	31.25	78.75	125	312.5
Measuring Range (R)	Q_3/Q_1		315	315	315	315
Temperature Class			T50	T50	T50	T50
Max Admissible Pressure		bar	16	16	16	16
Pressure Loss Class ΔP		bar	0.1	0.1	0.16	0.16
Verification Scale Interval		m ³	0.0005	0.0005	0.0005	0.005
Indicating Range		m ³	999 999	999 999	999 999	9 999 999
Working Pressure Range		bar	From 0.3 to 16			
Orientation Requirements	Horizontal					

Dimension



Meter Size			DN50	DN80	DN100	DN150	
Dimensions	Overall length	L	mm	200	200	250	300
	Height	H	mm	120	150	150	177
	Height	h	mm	73	95	105	135
	Dismantling height	g	mm	200	270	270	356
Weights	Meter complete		kg	7.8	13.8	18.2	35.9
	Measuring insert		kg	1.5	3.2	3.2	5.9
	Body		kg	6.3	10.6	15.0	30.0



Pulse Values

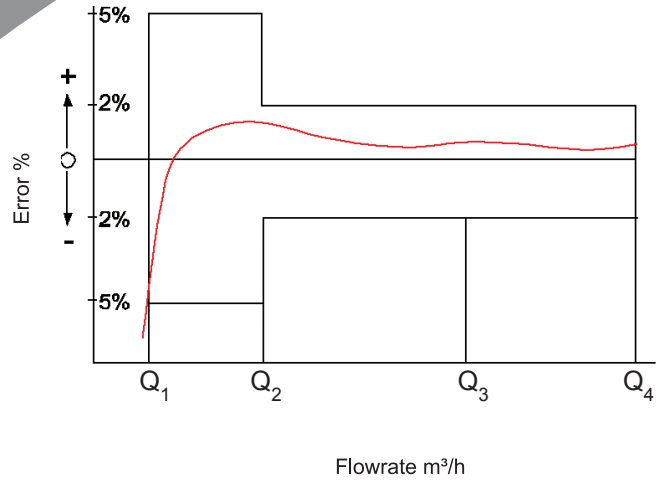
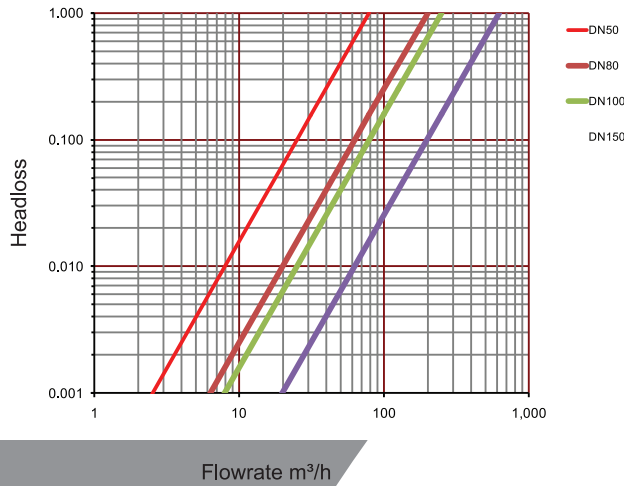
Pulsar Type		DN 50 ... 125	Pulse Value	DN150
HRI-Mei (Leaflet see LS 8400)		0.01; 0.05; 0.1 or 1 m ³		0.1; 0.5; 1 or 10 m ³
OD 01 (Leaflet see LB 8300)		0.001 m ³		0.01 m ³
OD 03 (Leaflet see LB 8300)		0.01 m ³		0.1 m ³

Installation Requirements

Pipe	horizontal	
Meter head	upwards	

Typical Headloss

Typical Error Curve



Approval Certificate



George Kent (Malaysia) Berhad (1945-X)

George Kent Technology Center
 1115 Jalan Puchong, Taman Meranti Jaya,
 47120 Puchong, Selangor, Malaysia.
 Tel : +603-8064 8000
 Fax : +603-8061 9926
www.georgekent.net



The Company policy is one of continuous improvement and the right is reserved to modify the specifications without prior notice